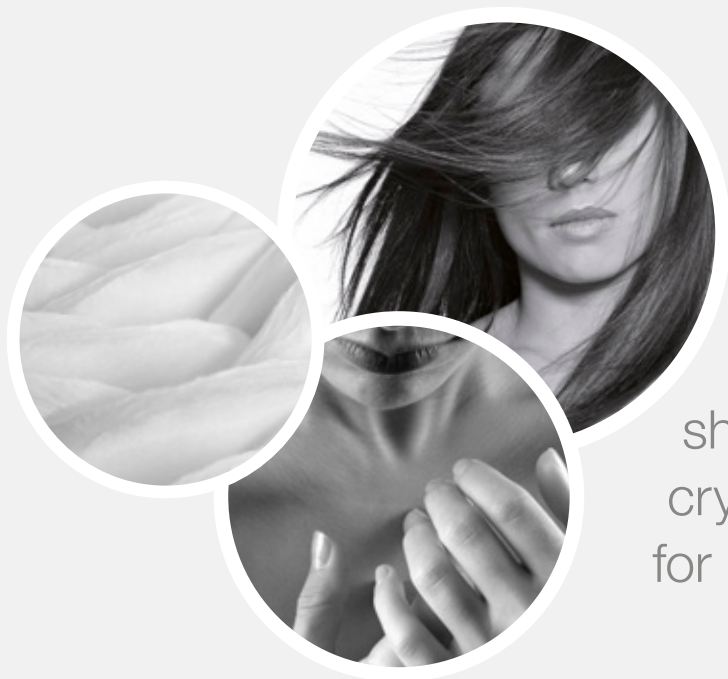


emollients
semi-solids

Lipex Shea™



High stability, semi-solid shea butter with a superior crystallization profile. Suitable for use across a wide range of cosmetic applications.

redefine
natural

Personal Care

AAK

Lipex Shea™

Recommended applications: skin care, hair care, lip care

INCI NAME Butyrospermum Parkii Butter

An optimized pure shea butter with a superior crystallization profile and a high unsaponifiable content. Suitable for use across a wide range of cosmetic applications.

Appearance: off-white solid butter

Unsaponifiables: 7%

Slip melting point: 33°C

Solid fat content at 35°C: 20%

OSI: 45h, 110°C



COSMOS APPROVED



Life Cycle Analysis

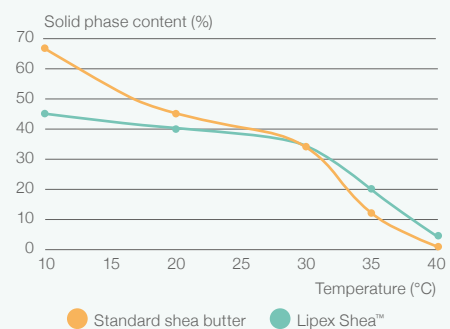
Typical use concentrations:

15–25% for butters, 1–10% for lotions and creams, 1–4% for hair care conditioners and treatments, 2–4% for lip care

Key features and benefits

- Stable and rapid crystallization pattern enables almost unlimited levels of use in formulations without the signs of recrystallization and bloom formation typically associated with standard shea butters.
- Rapid stabilization increases shelf life and delivers smooth, soft formulation textures across a wide range of cosmetic applications.
- Moisturizing and conditioning properties deliver softening and smoothing benefits to cosmetic formulations

Melting profile of Lipex Shea™ vs standard shea butter



A flat curve indicates a less temperature sensitive ingredient and better stability against bloom.

Formulation suggestions

Light Body Lotion with Lipex Shea
AAK-09-78till

moisturizing texturizing
karité butter
women's gold rich bloom
smooth crystallization control
control

Recommended AAK partner products:

Lipex PreAct™, Lipex Bassol C™, Lipex SheaLight™, Lipex SheaSoft™, Lipex L'sens™

For samples, specifications, formulations and more, please visit
aakpersonalcare.com



AAK Sweden AB
AAK Personal Care
SE-374 82 Karlshamn Sweden
Phone +46 454 820 00

AAK USA Inc.
499 Thornall St., 5th Floor
Edison, NJ 08837 USA
Phone +1 973 741 5049

AAK China Ltd.
6F, Building 6, #3601
Dongfang Road Shanghai China 200125
Phone +86 21 6466 7979

