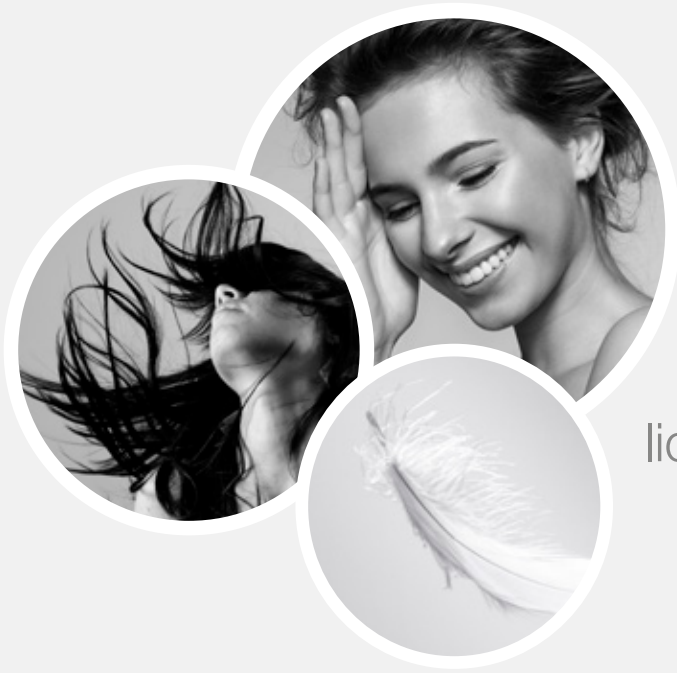


emollients  
esters

Lipex SheaLight™



Unique, eco-designed  
liquid shea ester for a light,  
silky soft feel in skin,  
sun and hair care products

redefine  
natural

Personal Care

**AAK**

# Lipex SheaLight™

**Recommended applications:** skin care and cleansing products, sun care, hair care

**INCI NAME** Shea butter ethyl esters

Lipex SheaLight is an eco-friendly, multifunctional shea butter ester offering excellent spreadability and a very light, silky soft skin feel. Its low viscosity, high polarity and good solubilizing properties allow Lipex SheaLight to be combined with a variety of other ingredients for functional use across a wide range of cosmetic applications and formats, including sprayable formulations. A Sustainable Beauty Award Winner, Lipex SheaLight is derived from renewable sources and produced using energy-saving catalysts and processes. The low melting point means it is suitable for cold processing, making it an environmentally friendly choice all round.

**Appearance:** clear, slightly yellow liquid

**Unsaponifiable content:** 5 – 8%

**Cloud point:** 14 °C

**Slip melting point:** 10 °C

**Viscosity:** 10 mPas @20 °C,  
6 mPas @40 °C

**Polarity:** surface tension 25 mN/m,  
interfacial tension 13 mN/m



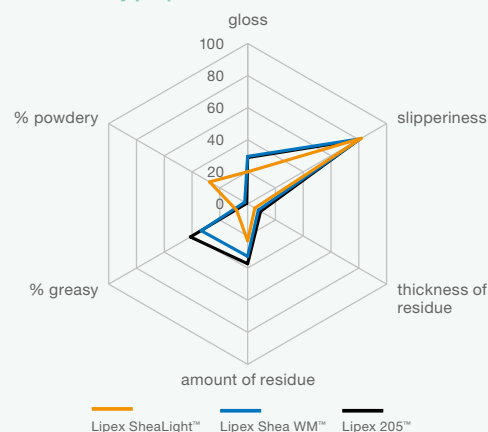
## Skin care and cleansing applications

**Typical use concentrations:** 1 – 20% in emulsions and 5 – 70% in anhydrous products

### Key features and benefits

- Delivers a silky-smooth, powdery skin feel and offers unique sensory properties, opening up new possibilities for eco-conscious face and body care formulations with lighter textures and improved aesthetics.
- Reduces viscosity, improves spreadability and lowers tackiness, making it an excellent sensory and performance enhancer for a wide range of skin care formulations, including massage oils.
- Low viscosity, high polarity and good solubilizing properties make Lipex SheaLight an excellent choice for anhydrous and emulsion-based cleansing formulations, as it effectively dissolves skin impurities and all types of makeup, including waterproof products.

### Sensory properties: afterfeel @ 20 minutes



## Formulation suggestions

### Cleansing

Natural Glow Eco Conscious Face Polish  
**AAK-16-251**

Light Cleansing Emulsion  
**AAK-151-314**

Pure Start Dual-Phase Cleanser  
**AAK-15-310**

### Skin care

Night Recovery Oil Drops  
**AAK-14-245**

Moisture Rescue Eco-Conscious Body Cream  
**AAK-16-250**

Superfluid Correct & Protect BB Cream  
**AAK-15-313**

### Recommended AAK partner products:

Lipex Bassol C™, Akogel™, Lipex SheaTris™, Lipex 205™, Lipex WM™

# Silky **Light** eco-designed **Shea esters** Highly polar conditioning UV filter carrier multifunctional Fast spreading **satiny** Sustainable

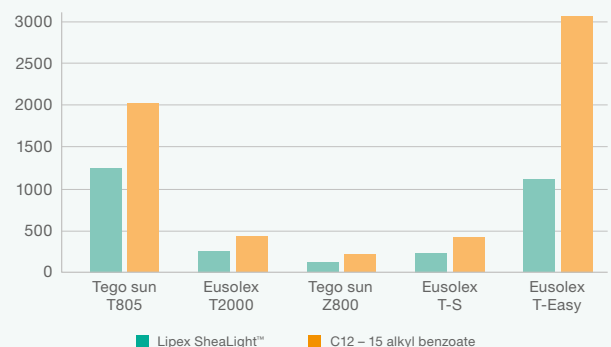
## Sun care applications

Typical use concentrations: 5 – 20% in emulsions and 20 – 80% in anhydrous products

### Key features and benefits

- Good solubilizing and dispersion capacity for both organic and inorganic UV filters make Lipex Shea Light suitable for use in all types of sun care where a high SPF in combination with good aesthetics is essential.
- Comparative studies on Lipex SheaLight show effects on:
  - » Crystalline, solid organic UV filters – good solubility and aesthetics
  - » Powder type inorganic UV filters – low viscosity dispersions with high pigment load
  - » Final performance of formulated products - lower ghosting, better absorption and improved finish

Comparison of different carriers and pigments at high concentration (40%)



## Formulation suggestions

### Sun protection

Sun Care Lotion SPF 30  
**AAKUS-14-103**

Sun Care Oil SPF 30  
**AAK-14-275**

### After sun care

After Sun Soothing Spray Oil  
**AAK-14-278**

### Recommended AAK partner products:

Lipex Bassol C™, Lipex SheaTris™, Lipex PreAct™, Lipex Shea WM™

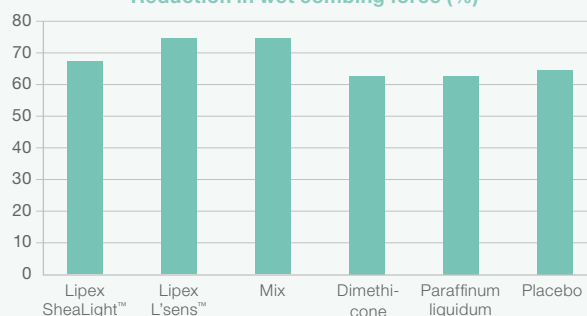
## Hair care applications

**Typical use concentrations:** 1 – 2% in shampoos, 3 – 5% in conditioners and 1 – 50% in hair oils

### Key features and benefits

- Low viscosity, high polarity and good spreadability ensure uniform coating of hair fibers with a thin, weightless, moisturizing film to improve silkiness, shine and combability, making Lipex SheaLight a good alternative to non-volatile silicone oils, mineral oils and synthetic esters in hair care and styling treatments.
- Lipex SheaLight alone, or in combination with Lipex L'sens, has been shown to outperform both synthetic and placebo benchmarks in reducing wet combing force reduction, making it an excellent choice for rinse-off conditioning treatments.
- Readily biodegradable, Lipex SheaLight can be combined with eco-friendly surfactants to produce environmentally-safe shampoos and conditioners.
- Solubilizing properties make it possible to incorporate actives that can otherwise be difficult to include in regular hair and scalp treatment systems.

**Reduction in wet combing force (%)**



### Formulation suggestions

#### Hair care and styling

Deep Nourishing Conditioning Treatment  
**AAK-16-270**

Lightweight Wave Defining Cream  
**AAK-16-272**

#### Scalp treatment

Moisturizing Scalp Serum  
**AAK-14-225tili**

### Recommended AAK partner products:

Lipex L'sens™, Lipex SheaTris™, Lipex Collect™, Lipex PreAct™, Lipex SheaLiquid TR™

For samples, specifications, formulations and more, please visit  
[aakpersonalcare.com](http://aakpersonalcare.com)



**AAK Sweden AB**  
AAK Personal Care  
SE-374 82 Karlshamn Sweden  
Phone +46 454 820 00

**AAK USA Inc.**  
499 Thornall St., 5th Floor  
Edison, NJ 08837 USA  
Phone +1 973 741 5049

**AAK China Ltd.**  
6F, Building 6, #3601  
Dongfang Road Shanghai China 200125  
Phone +86 21 6466 7979

