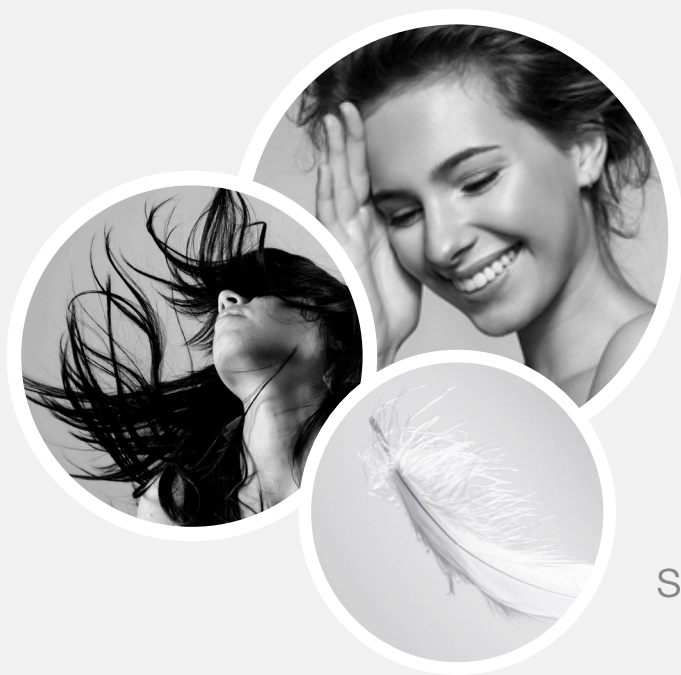


emollients  
esters

LIPEX® SheaSolve™



Unique, eco-designed  
liquid shea ester for a  
silky soft feel in skin,  
sun and hair care products

redefine  
natural

Personal Care

**AAK**

# Lipex SheaSolve™

**Recommended applications:** skin care with SPF claims, hair care applications, skin care and cleansing applications

**INCI NAME** Shea butter ethyl esters

Lipex SheaSolve is an eco-friendly, multifunctional shea butter ester offering excellent spreadability and a silky soft skin feel. Its low viscosity, high polarity and good solubilizing properties allow Lipex SheaSolve to be combined with a variety of other ingredients for functional use across a wide range of cosmetic applications and formats, including sprayable formulations. A Sustainable Beauty Award Winner, Lipex SheaSolve is derived from renewable sources and produced using energy-saving catalysts and processes. The low melting point means it is suitable for cold processing, making it an environmentally friendly choice all round.

**Appearance:** clear, slightly yellow liquid

**Cloud point:** 14 °C

**Slip melting point:** 10 °C

**Viscosity:** 10 mPas @20 °C,  
6 mPas @40 °C

**Polarity:** surface tension 25 mN/m,  
interfacial tension 13 mN/m



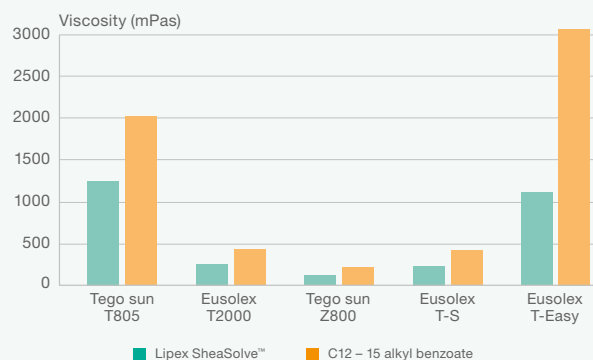
## Skin care with SPF claims

**Typical use concentrations:** 5 – 20% in emulsions and 20 – 80% in anhydrous products

### Key features and benefits

- Good solubilizing and dispersion capacity for both organic and inorganic UV filters make Lipex SheaSolve suitable for use in all types of sun care where a high SPF in combination with good aesthetics is essential.
- Comparative studies on Lipex SheaSolve show effects on:
  - » Crystalline, solid organic UV filters – good solubility and aesthetics
  - » Mineral inorganic UV filters – low viscosity dispersions with high pigment load
  - » Final performance of formulated products - lower ghosting, better absorption and improved finish

Lipex SheaLight is an excellent dispersing agent for inorganic UV filters used at high concentrations (40%)



## Formulation suggestions

### Sun protection

Sun Care Lotion SPF 30  
AAKUS-14-103

### After sun care

After Sun Soothing Spray Oil  
AAK-14-278

### Recommended AAK partner products:

Lipex Bassol C™, Lipex SheaTris™, Lipex SheaLiquid TR™, Lipex SheaClear™, Lipex PreAct™, Lipex SheaSoft TR™

UV filter solubilizer **Silky** eco-designed  
**Shea esters** Highly polar conditioning  
 UV filter dispersant multifunctional  
 Fast spreading **satiny** Sustainable

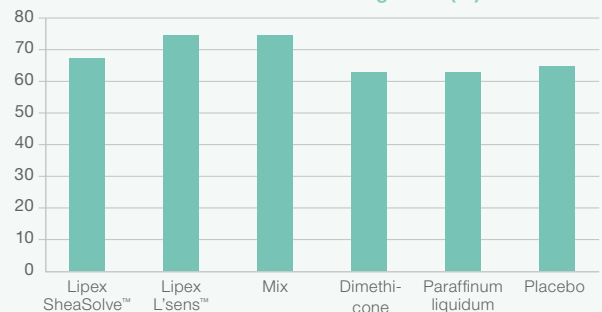
## Hair care applications

**Typical use concentrations:** 1 – 2% in shampoos, 3 – 5% in conditioners and 1 – 50% in hair oils

### Key features and benefits

- Low viscosity, high polarity, and good spreadability ensure uniform coating of hair fibers with a thin, weightless, moisturizing film to improve silkiness, shine and combability, making Lipex SheaSolve a good alternative to non-volatile silicone oils and synthetic esters in hair care and styling treatments.
- Lipex SheaSolve alone, or in combination with Lipex L'sens, has been shown to outperform both synthetic and placebo benchmarks in reducing wet combing force reduction, making it an excellent choice for rinse-off conditioning treatments.
- Readily biodegradable, Lipex SheaSolve can be combined with eco-friendly surfactants to produce environmentally-safe shampoos and conditioners.
- Solubilizing properties make it possible to incorporate lipophilic actives that can otherwise be difficult to include in regular hair and scalp treatment systems.

Reduction in wet combing force (%)



### Formulation suggestions

#### Hair care and styling

Deep Nourishing Conditioning Treatment  
**AAK-16-270**

Lightweight Wave Defining Cream  
**AAK-16-272**

#### Scalp treatment

Moisturizing Scalp Serum  
**AAK-14-225tlli**

### Recommended AAK partner products:

Lipex L'sens™, Lipex SheaTris™, Lipex Collect™, Lipex PreAct™, Lipex SheaLiquid TR™

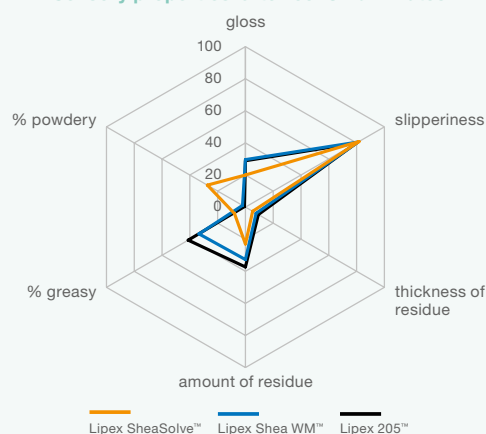
# Skin care and cleansing applications

Typical use concentrations: 1 – 20% in emulsions and 5 – 70% in anhydrous products

## Key features and benefits

- Delivers a silky-smooth, powdery skin feel and offers unique sensory properties, opening up new possibilities for eco-conscious face and body care formulations with lighter textures and improved aesthetics.
- Reduces viscosity, improves spreadability and lowers tackiness, making it an excellent sensory and performance enhancer for a wide range of skin care formulations, including massage oils.
- Low viscosity, high polarity and good solubilizing properties make Lipex SheaSolve an excellent choice for anhydrous and emulsion-based cleansing formulations, as it effectively dissolves skin impurities and all types of makeup, including waterproof products.

## Sensory properties: afterfeel @ 20 minutes



## Formulation suggestions

### Cleansing

Natural Glow Eco Conscious Face Polish  
**AAK-16-251**

Light Cleansing Emulsion  
**AAK-151-314**

Pure Start Dual-Phase Cleanser  
**AAK-15-310**

### Skin care

Night Recovery Oil Drops  
**AAK-14-245**

Moisture Rescue Eco-Conscious Body Cream  
**AAK-16-250**

Superfluid Correct & Protect BB Cream  
**AAK-15-313**

## Recommended AAK partner products:

Lipex Bassol C™, Lipex SheaTris™, Lipex SheaLiquid TR™, Lipex SheaClear™, Lipex PreAct™, Lipex SheaSoft TR™

For samples, specifications, formulations and more, please visit  
[aakpersonalcare.com](http://aakpersonalcare.com)



AAK Sweden AB  
AAK Personal Care  
SE-374 82 Karlshamn Sweden  
Phone +46 454 820 00

AAK USA Inc.  
499 Thornall St., 5th Floor  
Edison, NJ 08837 USA  
Phone +1 973 741 5049

AAK China Ltd.  
6F, Building 6, #3601  
Dongfang Road Shanghai China 200125  
Phone +86 21 6466 7979

